



EXPTEL 30 - POINT OF USE LIQUID WATER, OIL & PARTICULATE COMPRESSED AIR FILTER



**EXPTEL INCREASES LIFE
WHILST REDUCING
OPERATING COSTS**

**MAXIMUM
OPERATING
PRESSURE**

- 15 Bar or 217 Psi

**MAXIMUM
OPERATING
FLOW**

- 30 CFM or 850 Ltrs/Min



- Expel removes 99.9999% of all liquids (water & oils)
- Expel removes all particulates down to 1 micron – 99.9999%
- No reduction in performance regardless of flow and pressure
- 3 patents pending
- The world's first cleanable reusable filter
- No power source required
- 2 years manufacturer's warranty
- Easy to fit / install
- Easy to dismantle and service – lift, twist, pull
- Pressure indicator fitted as standard
- Option to fit pressure gauge
- Manufactured in stainless steel 304
- Optional – manual drain tap or autodrain
- Tested to ISO 12500 standards
- All spare parts available should you ever need them

Original Ltd
Unit 52 , Atcham Business Park
Shrewsbury, Shropshire, SY4 4UG

Tel: +44 (0) 345 50 50 222

Email: sales @originaldesign.com

A unique patent protected product designed to revolutionise the compressed air industry

TECHNICAL DATA

Exceptional compressed air quality guaranteed

Expel will dramatically improve compressed air systems throughout the industry. The unique patented design allows it to efficiently remove 99.9999% of liquid, oil, water and removes other contaminants down to 1 micron when installed at point of use.

PRODUCT OVERVIEW

- 30 cfm max rated flow rate
*See technical data below
- 15 bar(g) - 217 psi(g) maximum pressure
- 2 year manufacturer's warranty
- ½" & ¾" BSPT / NPT inlet / outlet connections
- Removes 99.9999% all liquid water, oils, and filters particulates down to 1 micron
- Grade 304 stainless steel body and head
- Pressure indicator as standard
- Optional pressure gauge.
- ½" BSPT / NPT male drain port

FEATURES

- Tested to ISO 12500 - part 3 & 4 standard
- Worlds first cleanable, reusable compressed air filter
- No increase in pressure drop caused by contaminated filters
- No power source required
- Significantly reduced life cycle costs
- Easy to install & maintain
- Instantaneous recovery from pulsed flows or stop start
- All spare parts available
- Fully dismantlable
- No decrease in performance over lifetime of well maintained filter

OPERATIONAL SPECIFICATION

Flow rate for a 7 bar(g) system	0.14 - 0.85m ³ /min 8.5 - 51 m ³ /hr 5 - 30 cfm 141 - 850 litres/min
Operating pressure	1 - 15 bar(g) 15 - 217 psi(g)
Operating temperature	>0 to +80 °C >32 to 176 °F
Maximum recommended inlet temperature	35 °C 95 °F

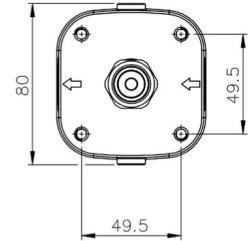
PRODUCT LINE DRAWING*



MECHANICAL SPECIFICATION

Product code - ½"	6000-002-AA
Product code - ¾"	6000-003-AA
Inlet/Outlet connection	½" or ¾" BSPT/NPT
Drain connection	½" (m) BSPT/NPT
Weight	2.08 kg
Product dimensions	293 mm x 80 mm
Particulate removal	> 1 micron
Material (housing)	Stainless Steel 304
Material (internal)	ABS

LINE DRAWING FOR MOUNTING*



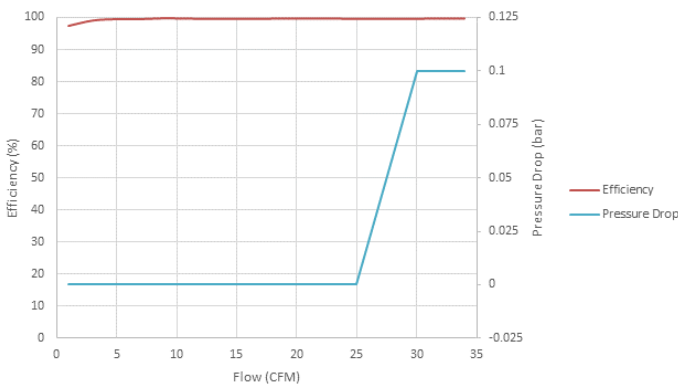
BOX CONTENTS QTY

Expel 30 Unit	1
Mounting bracket	1
Bolts M6 x 8 mm	4
Fixing Screws	4
Wall Plugs	4
Manual	1

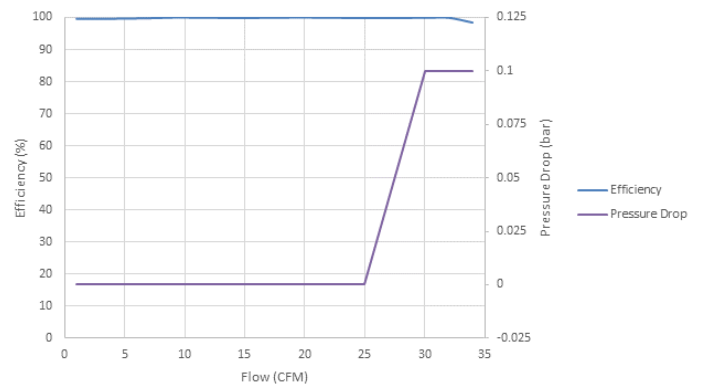
Manual and Automatic drains available contact us or visit our website www.originalav.com

*Not to scale

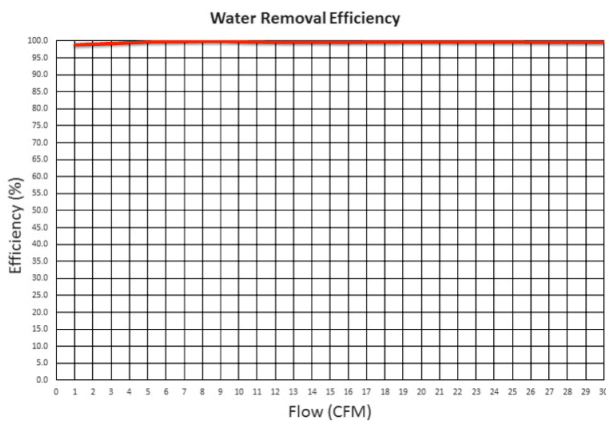
PRESSURE DROP (at 7 bar)



PRESSURE DROP (at 6 bar)



LIQUID WATER REMOVAL



PRESSURE DROP (at 8 bar)

